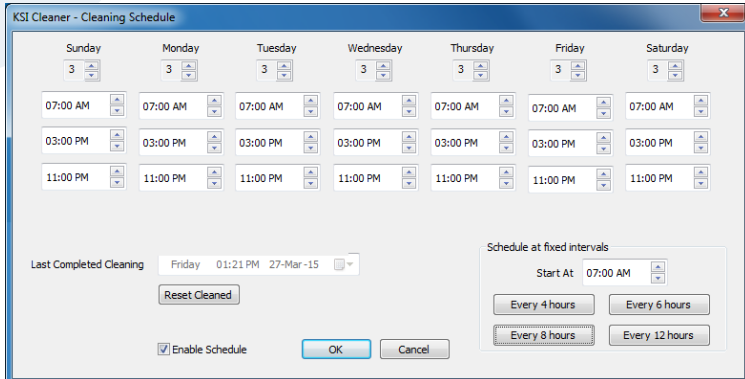


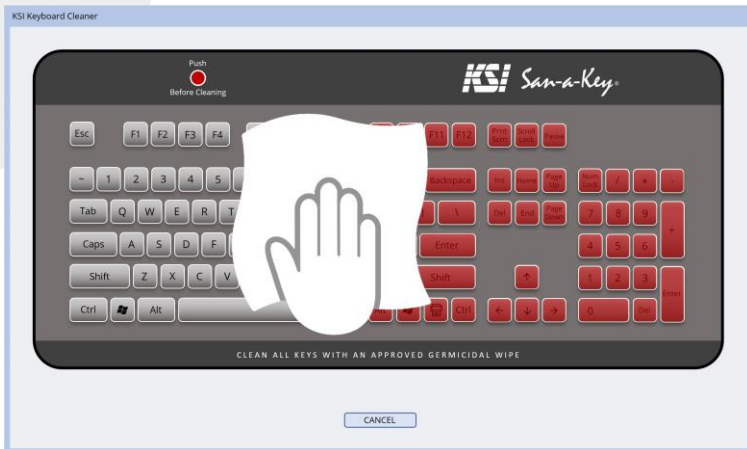
KEYBOARD CLEANING MADE EASY

San-a-Key®



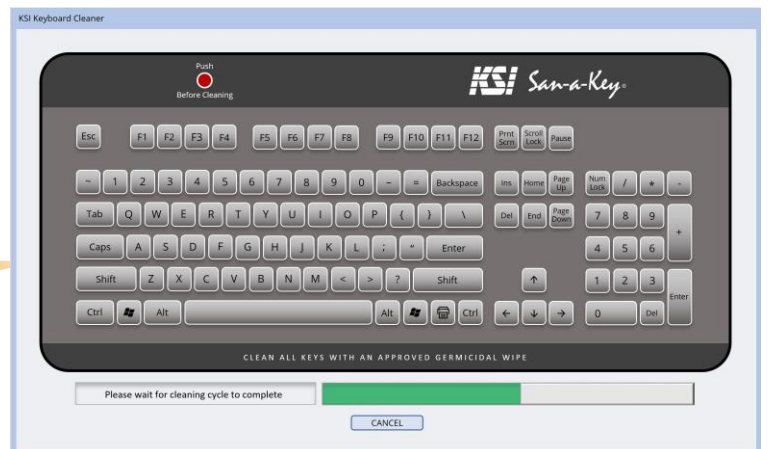
SET CLEANING
FREQUENCY AND
OTHER USER-DEFINED
PARAMETERS

PUSH NOTIFICATIONS
PROMPT END USERS TO
CLEAN ACCORDING TO
USER-DEFINED SCHEDULING



ONSCREEN ANIMATION
TURNS EACH RED "DIRTY" KEY
TO BLACK UPON WIPING WITH
STANDARD, APPROVED WIPES

SAN-A-KEY® COLLECTS
END USER CLEANING DATA
FOR USE BY HOSPITAL
ADMINISTRATORS



ID	SESSION	DATE TIME	LOCAL TIME	UID	COMPUTER NAME	USER NAME	OPERATION	OP. TIME	OP. RESULT	KEYS	MEM	TIME
280	CLEANING	9.159 2015-04-10 10:45:12	2015-04-10 09:45:12	6	WIN7-64-H1-07	SYSTEM						1748
281	SCHEDULE	9.212 2015-04-10 12:02:56	2015-04-10 05:02:56	6	WIN7-64-H1-07	User01	CLEAN		ABORT	92		16
282	SCHEDULE	9.231 2015-04-10 12:32:05	2015-04-10 05:32:05	6	WIN7-64-H1-07	User01	WARNING	9.25				
283	SCHEDULE	9.251 2015-04-10 13:01:14	2015-04-10 06:01:14	6	WIN7-64-H1-07	User01	SCHEDULED	9.25				
284	SESSION	9.271 2015-04-10 11:14:21	2015-04-10 04:14:21	6	WIN7-64-H1-07	User01						8101
285	SESSION	9.271 2015-04-10 13:30:23	2015-04-10 06:30:23	6	WIN7-64-H1-07	SYSTEM						1166
286	CLEANING	9.305 2015-04-10 15:45:47	2015-04-10 08:45:47	6	WIN7-64-H1-07	SYSTEM	CLEAN		COMPLETED	104		18
287	SESSION	9.358 2015-04-10 15:36:04	2015-04-10 08:36:04	6	WIN7-64-H1-07	SYSTEM						1166
288	SESSION	9.372 2015-04-10 15:55:30	2015-04-10 08:55:30	6	WIN7-64-H1-07	User02						5246
289	SESSION	9.433 2015-04-10 17:22:57	2015-04-10 10:22:57	6	WIN7-64-H1-07	SYSTEM						1165
289	SESSION	9.446 2015-04-10 17:42:23	2015-04-10 10:42:23	6	WIN7-64-H1-07	User02						2914
290	SESSION	9.446 2015-04-10 17:42:23	2015-04-10 10:42:23	6	WIN7-64-H1-07	User02						2914
291	SCHEDULE	9.48 2015-04-10 18:30:58	2015-04-10 11:30:58	6	WIN7-64-H1-07	SYSTEM	WARNING	9.5				
292	SCHEDULE	9.5 2015-04-10 19:00:07	2015-04-10 12:00:07	6	WIN7-64-H1-07	SYSTEM	SCHEDULED	9.5				
293	SESSION	9.48 2015-04-10 18:30:58	2015-04-10 11:30:58	6	WIN7-64-H1-07	SYSTEM						2332
294	CLEANING	9.51 2015-04-10 19:09:50	2015-04-10 12:09:50	6	WIN7-64-H1-07	User02	CLEAN		COMPLETED	104		24
295	SESSION	9.507 2015-04-10 19:09:50	2015-04-10 12:09:50	6	WIN7-64-H1-07	User02						
296	SESSION	9.574 2015-04-10 20:47:00	2015-04-10 13:47:00	6	WIN7-64-H1-07	SYSTEM						
297	SESSION	9.595 2015-04-10 21:16:09	2015-04-10 14:16:09	6	WIN7-64-H1-07	User02						
298	SESSION	9.689 2015-04-10 23:32:11	2015-04-10 16:32:11	6	WIN7-64-H1-07	SYSTEM						
299	SCHEDULE	9.73 2015-04-11 00:30:29	2015-04-10 17:30:29	6	WIN7-64-H1-07	User02						
300	SESSION	9.709 2015-04-11 01:01:20	2015-04-10 17:01:20	6	WIN7-64-H1-07	SYSTEM						
301	SCHEDULE	9.756 2015-04-11 01:09:21	2015-04-10 18:09:21	6	WIN7-64-H1-07	SYSTEM						
302	CLEANING	9.763 2015-04-11 01:19:04	2015-04-10 18:19:04	6	WIN7-64-H1-07	SYSTEM						

SAN-A-KEY® GENERATES
MEANINGFUL REPORTS THAT
PINPOINT TRENDS AND
IDENTIFY WHERE LACK OF
CLEANING HAS OCCURRED